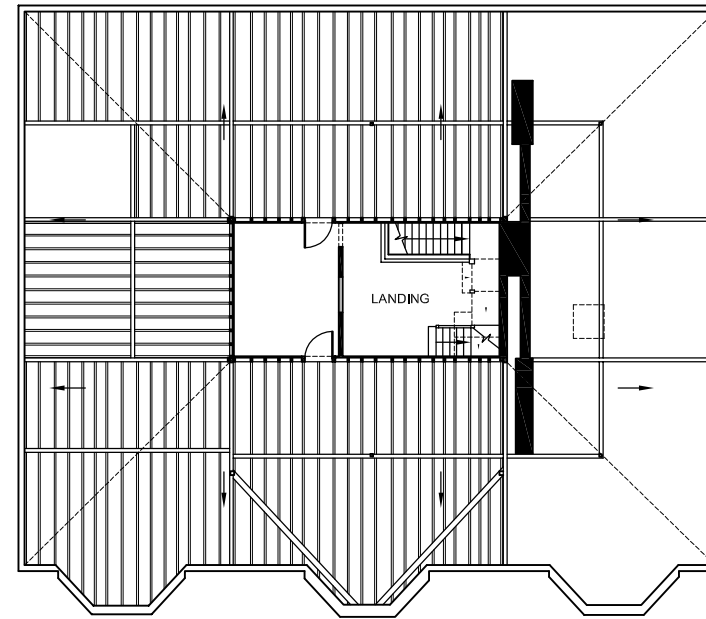
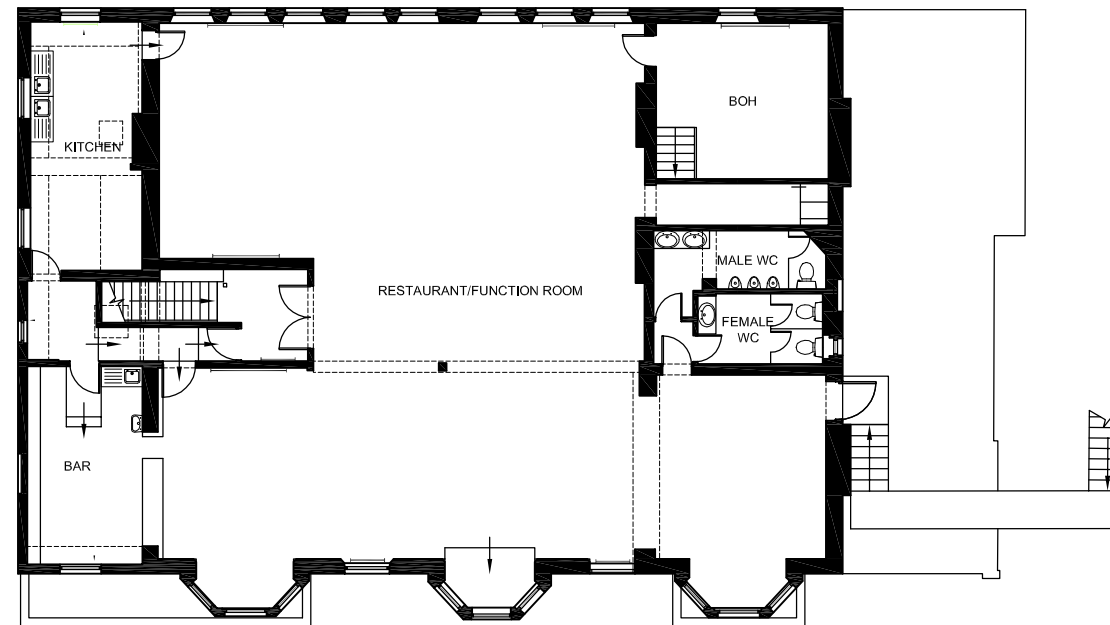


**EXISTING BUILDING AREAS**

	GROSS INTERNAL FLOOR AREAS			
	m <sup>2</sup>	- m <sup>2</sup>	ft <sup>2</sup>	- ft <sup>2</sup>
BASEMENT G.I.A.	224.5	- m <sup>2</sup>	2416.5	- ft <sup>2</sup>
GROUND FLOOR G.I.A.	364.5	- m <sup>2</sup>	3923.4	- ft <sup>2</sup>
FIRST FLOOR G.I.A.	308.2	- m <sup>2</sup>	3317.4	- ft <sup>2</sup>
SECOND FLOOR G.I.A.	24.8	- m <sup>2</sup>	266.9	- ft <sup>2</sup>
<b>TOTAL G.I.A.</b>	<b>922.0</b>	<b>- m<sup>2</sup></b>	<b>9924.0</b>	<b>- ft<sup>2</sup></b>



EXISTING SECOND FLOOR PLAN



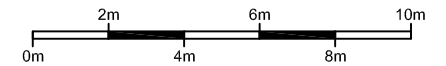
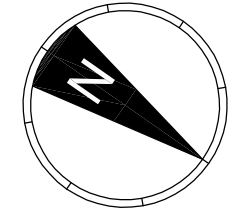
EXISTING FIRST FLOOR PLAN

**EXISTING FIRST & SECOND FLOOR PLANS**

ATTENTION IS DRAWN TO THE FOLLOWING REMAINING SIGNIFICANT HAZARDS

**NOTES**

1. ALL DIMENSIONS TO BE VERIFIED ON SITE
2. COPYRIGHT OF THIS DRAWING IS RESERVED BY RDT DESIGN
3. THIS DRAWING IS FOR PLANNING PURPOSES ONLY



PL1	PLANNING ISSUE	EJP	06.02.15
REV	DESCRIPTION	BY	DATE
STATUS			

**PLANNING**

CLIENT

PHARMCHEM INVESTMENTS LTD

PROJECT

RAW SPICE RESTAURANT  
117-125 WEST HENDON BROADWAY  
LONDON NW9 7BP

DRWG TITLE

EXISTING FIRST &  
SECOND FLOOR PLANS

DRAWN BY	DATE	SCALE	CHECKED BY
EJP	JAN 15	1:200@A3	CC

DRWG No.	REVISION
1031-PL-031	PL1



**design**

5 Kinsbourne Court, Luton Road  
Harpenden Hertfordshire AL5 3BL  
T: +44(0)1582 461060  
F: +44(0)1582 461061  
E: rdt@rdtdesign.co.uk  
www.rdtdesign.co.uk

architects • engineers • interior designers